



DC

BOLD

SCHOOLS



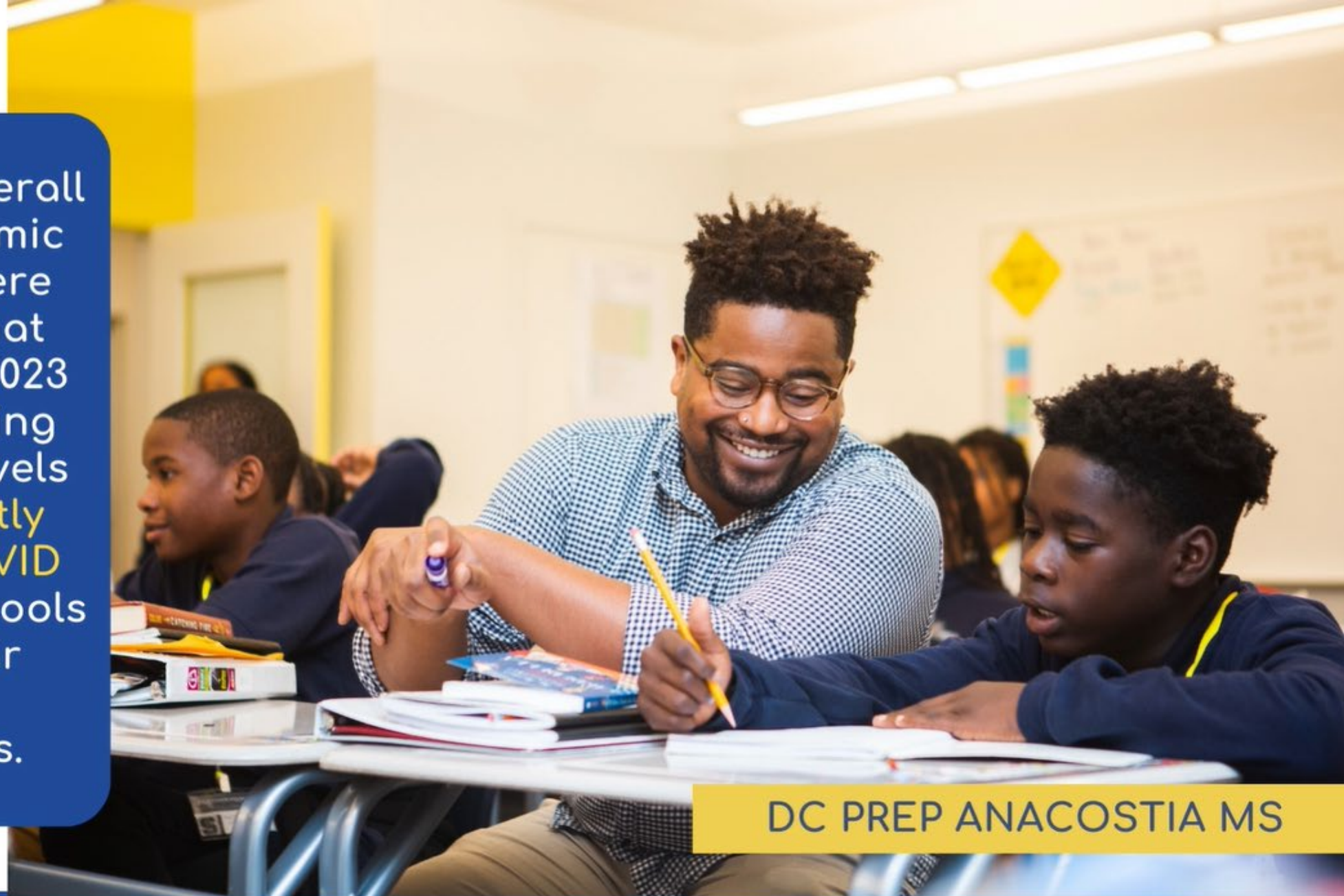
BOLD SCHOOLS

- Awarded annually since 2016
- “**Beating the odds**” analysis identifies schools with significantly higher than expected proficiency based on student populations
- Eligible schools serve >30% economically disadvantaged



WHITTIER ES (DCPS)

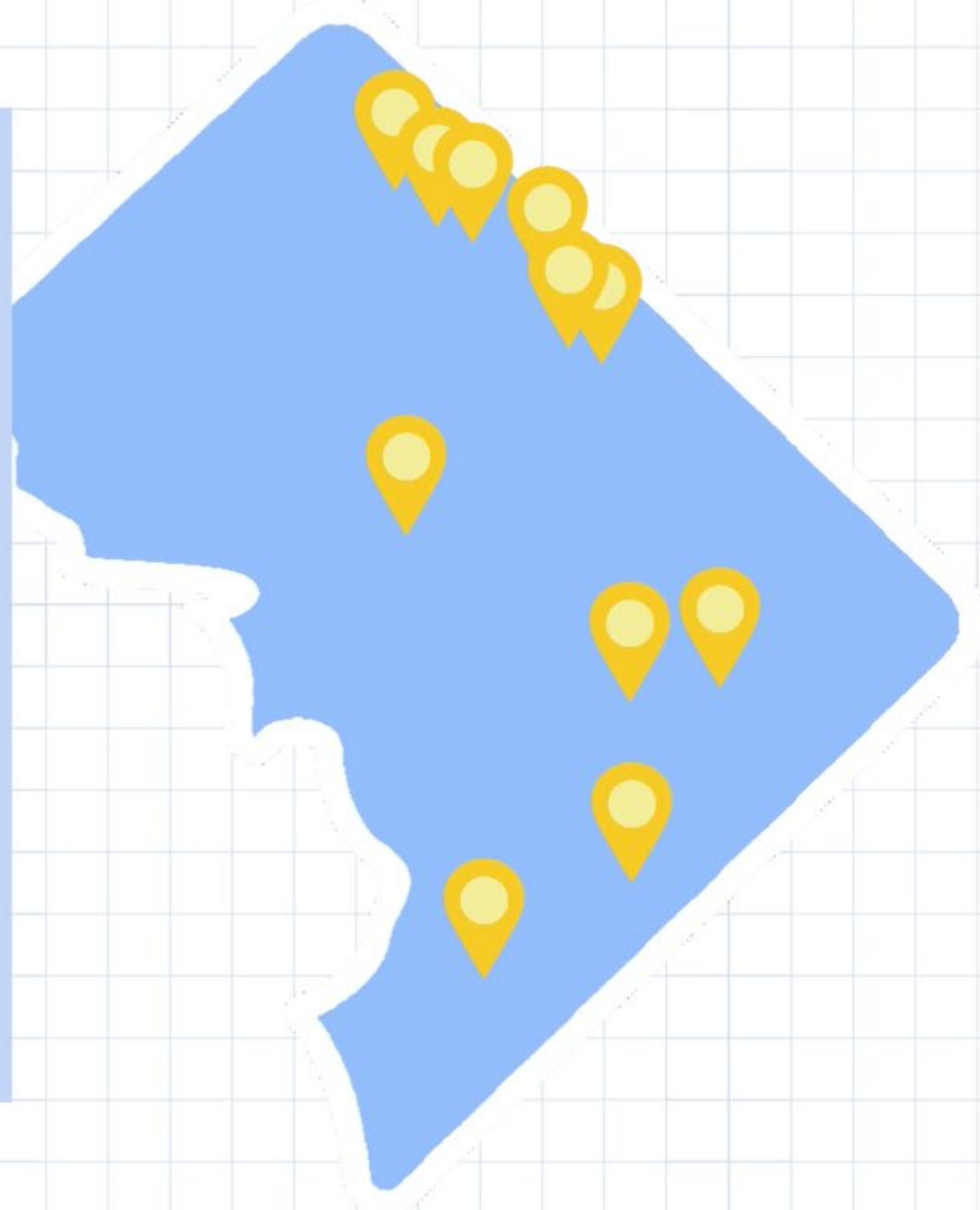
While the city overall lags pre-pandemic proficiency, there are schools that demonstrated 2023 math and reading performance levels that significantly exceed pre-COVID averages for schools serving similar grades and demographics.

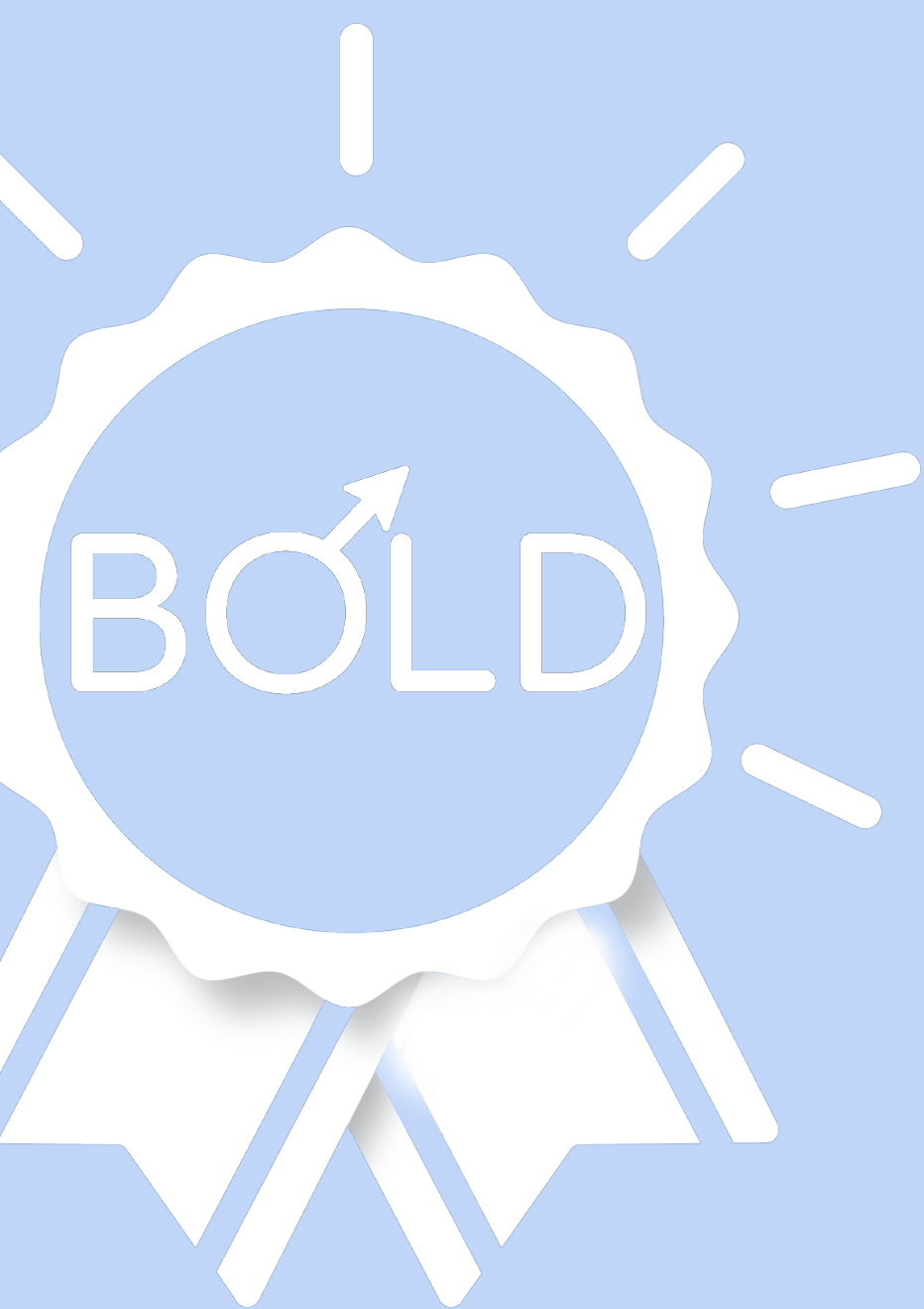


DC PREP ANACOSTIA MS

2023 Bold Performance

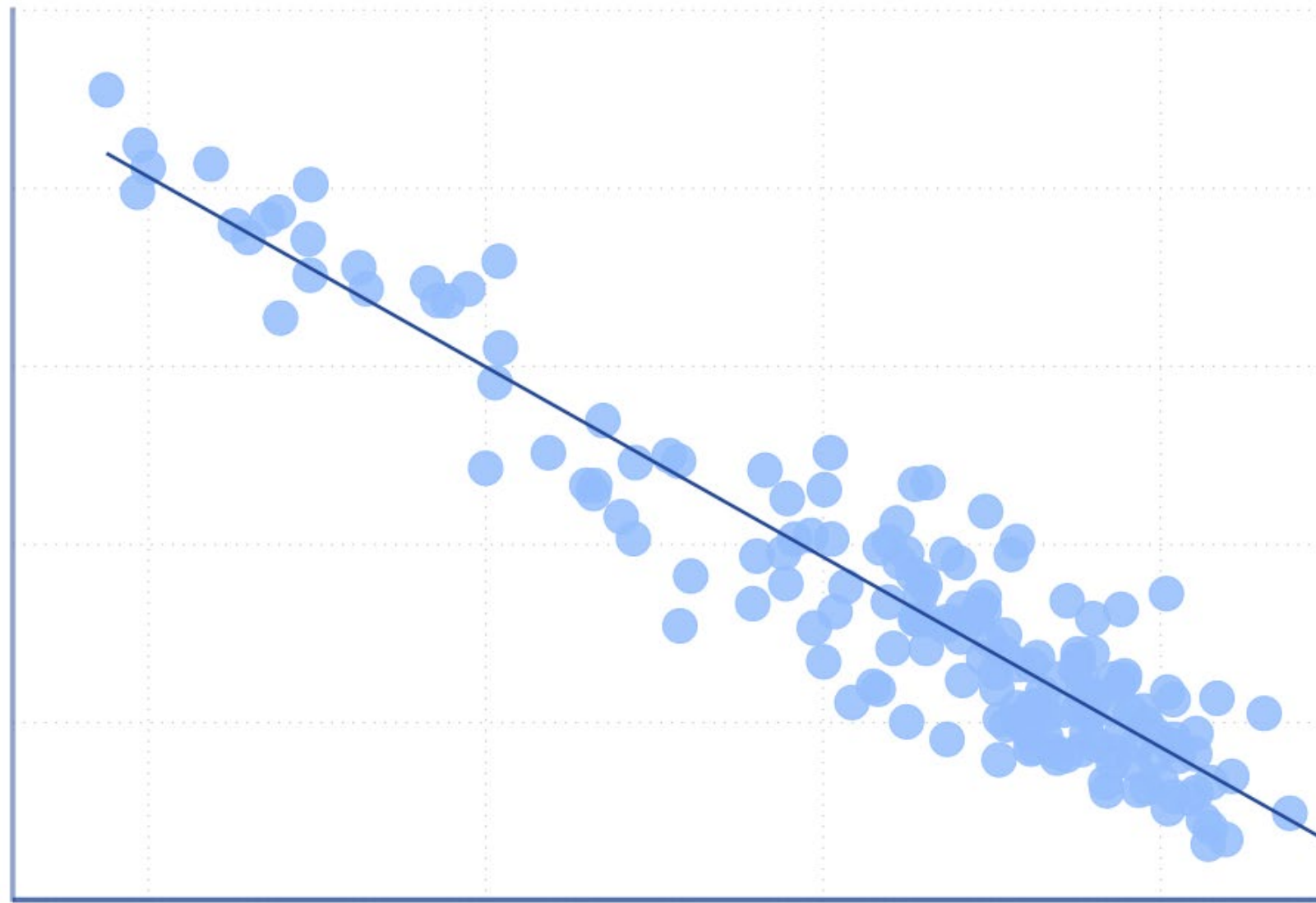
Burroughs ES (DCPS)
Center City - Congress Heights
DC Prep - Anacostia MS
Friendship - Blow Pierce ES and MS
Friendship - Ideal MS
Garrison ES (DCPS)
Langdon ES (DCPS)
Payne ES (DCPS)
Rocketship - Infinity
Roots
Whittier ES (DCPS)





**HOW WE IDENTIFY
BOLD
PERFORMANCE
SCHOOLS**

Schoolwide Math and Reading Proficiency



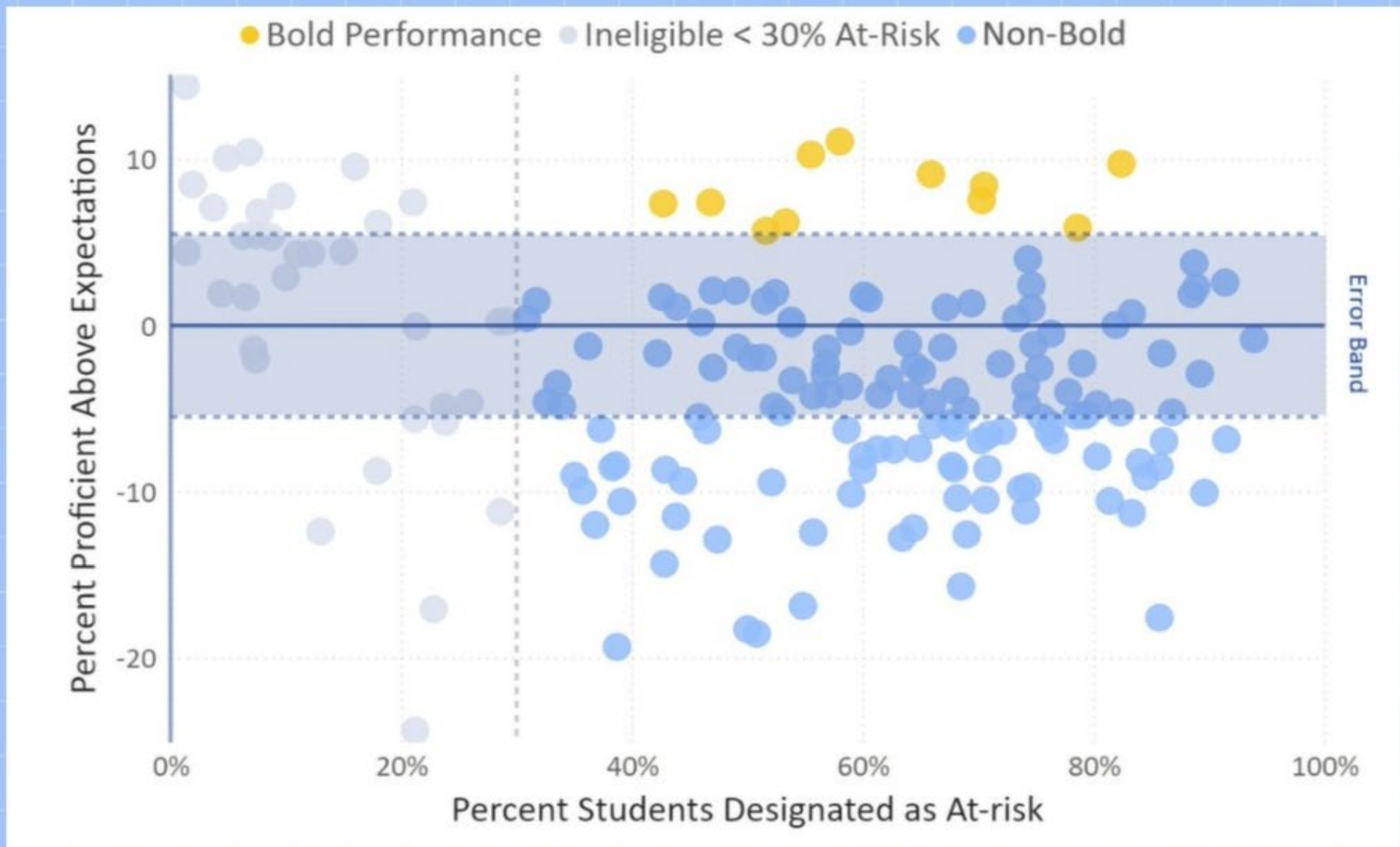
Percent of Tested Students from Priority Population Groups

BOLD SCHOOLS METHODOLOGY

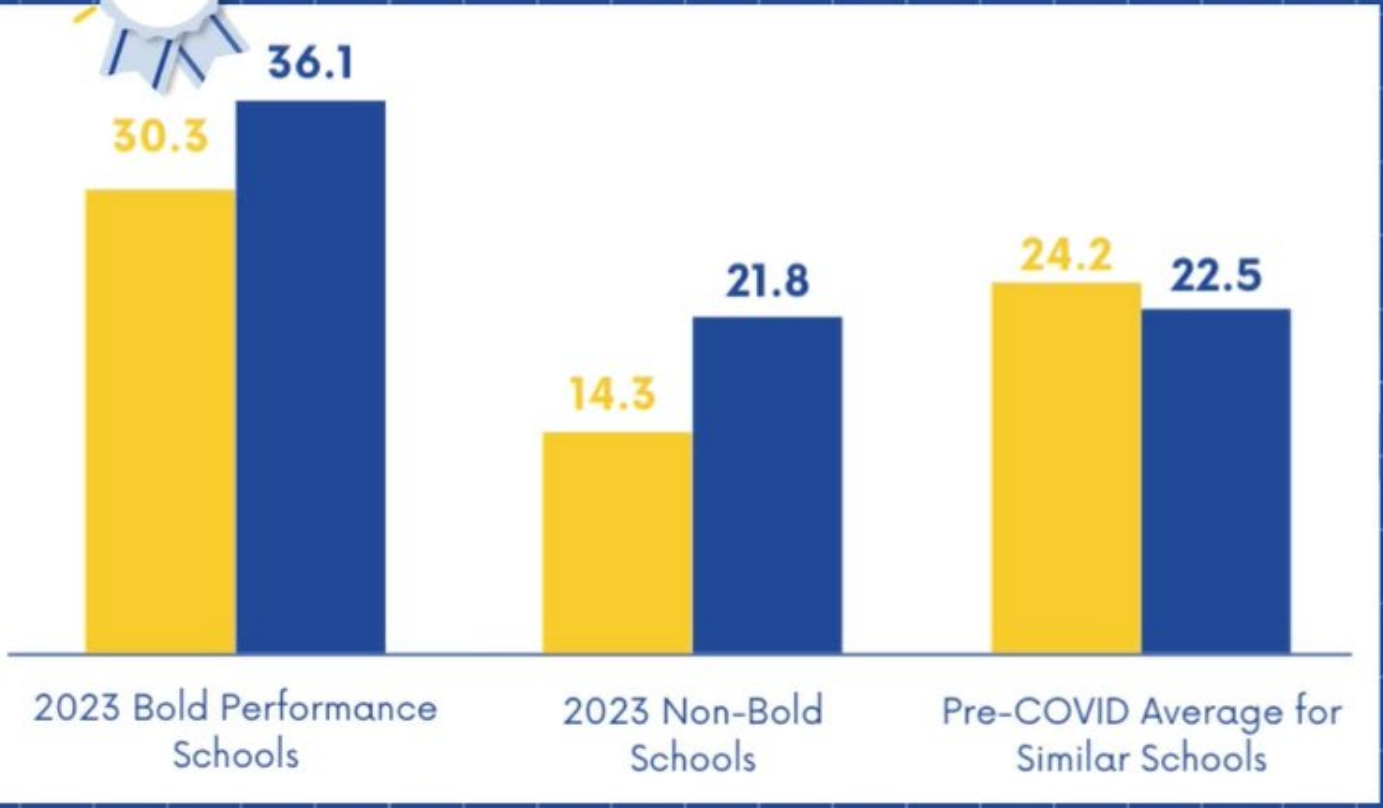
- Use multiple advanced machine learning algorithms to isolate the impact of a school from demographic factors it cannot control
- Create four separate ensemble models for math and reading, level 3+ and level 4+
- Find each school's average PPAE

PERCENT PROFICIENT ABOVE EXPECTED

2023 Bold Performance PPAE and Percent Economically Disadvantaged by School and Bold Status



PARCC 4+ PROFICIENCY IN MATH AND READING



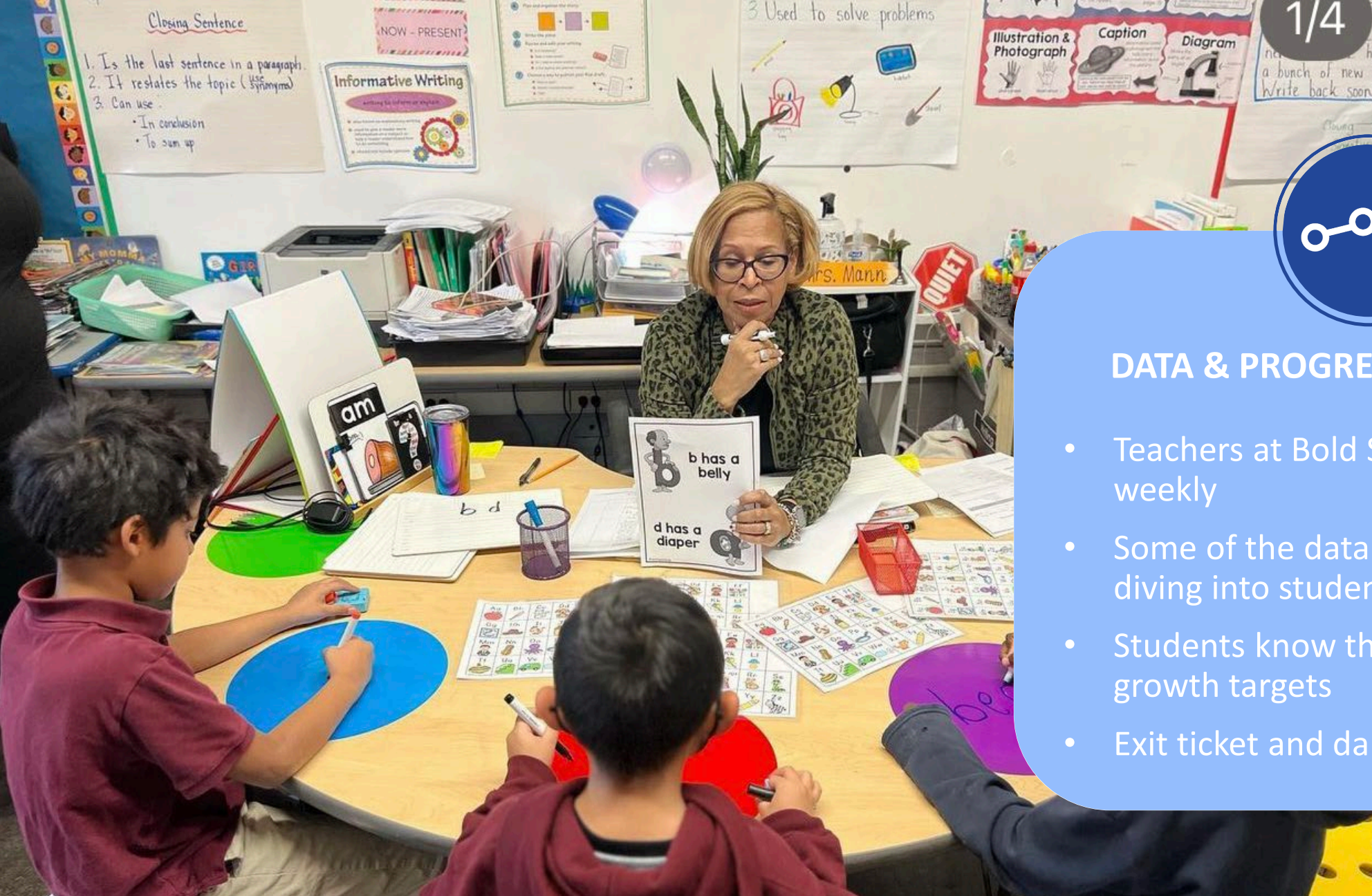
This year's 12 Bold Performance Schools have 2023 PARCC proficiency rates that were an average of 15.1 percentage points better than other Bold-eligible schools and 11.5 percentage points better than the pre-pandemic average performance for schools serving similar demographics.

 **Math Proficiency**

 **Reading Proficiency**

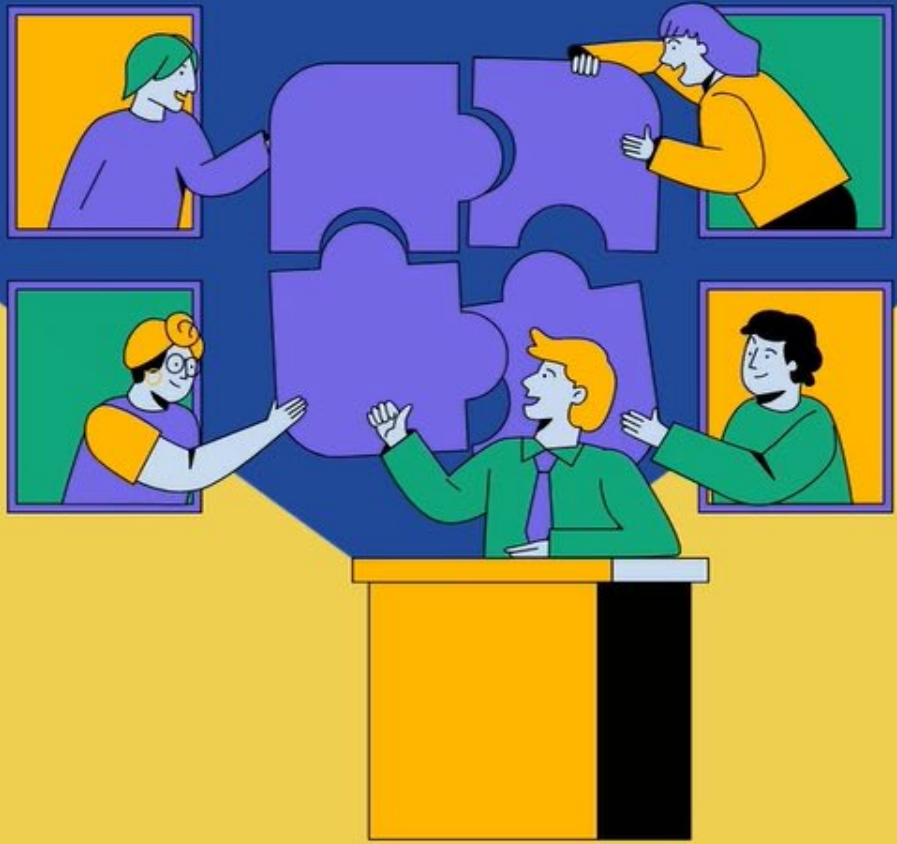


01: DATA ANALYSIS TO DRIVE INSTRUCTION



DATA & PROGRESS MONITORING

- Teachers at Bold Schools analyze data weekly
- Some of the data analysis is deep diving into student work
- Students know their own data and growth targets
- Exit ticket and daily trackers



02: TEACHER SUPPORT



INSTRUCTIONAL SUPPORT

- Educator collaboration
- Open classroom policies, pop-ins for peer feedback
- Lesson practice to address possible misconceptions
- Inclusive classroom PD



03: FAMILY ENGAGEMENT





FAMILY ENGAGEMENT

- Weekly newsletters about the next week to know the fun things students might miss
- Quarterly family surveys
- Parent focus groups and activities with food
- Class Dojo



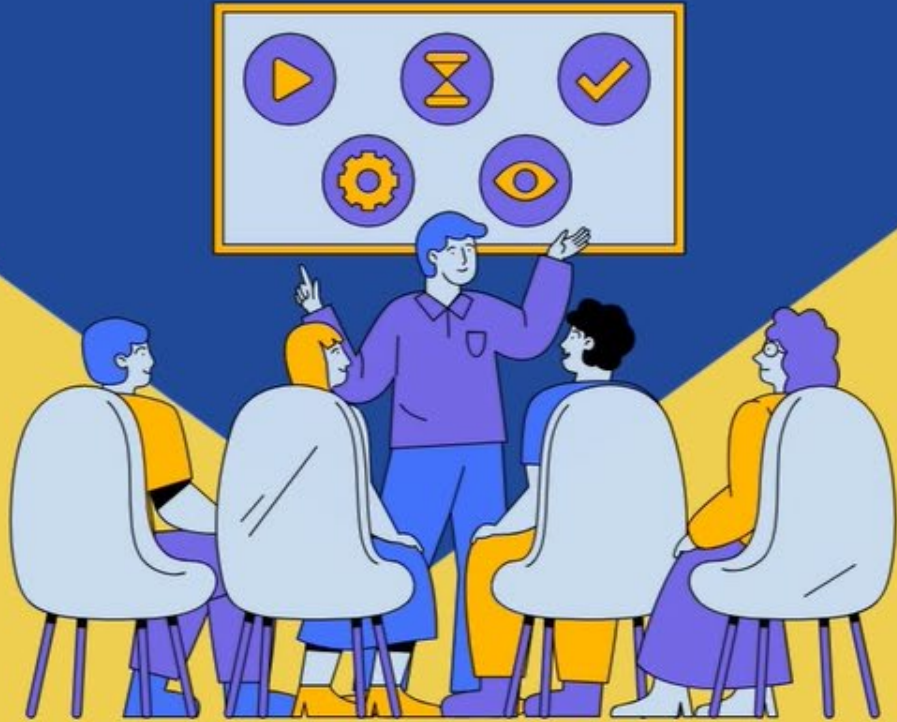
04: JOYFUL SCHOOL CLIMATE



EMPHASIZED FUN & JOY

- Student & educator wellbeing
- Fun Fridays
- BOOM Room
- Morning Meetings filled with joy and celebration
- Mindfulness activities for educators





05: TARGETED SMALL- GROUP AND INDIVIDUAL STUDENT INSTRUCTION



TARGETED INTERVENTION

- Data-driven small groups
- Teach-led tutoring opportunities
- Additional interventionists in the classroom providing tier 3 supports

Other Key Strategies Schools Identified

- **Maker spaces:** building space designed to provide learners with more experiences like creating a news broadcast, playing chess, and participating in enrichment activities that activate their literacy and numeracy skills
- **Additional instruction time:** Center City, Payne, Roots, and Whittier mentioned the importance of extended school day, tutoring, Saturday academies, and summer camps for supplemental instruction
- **Emphasis on science and social studies:** prioritize science and social studies instruction, ensuring every student, even in untested grade levels, receives multiple lessons per week

**DATA + COLLABORATION + JOY =
BOLD OPPORTUNITIES FOR ALL**



Our students need bold goals, bold approaches, and bold stakeholder collaboration to move beyond simple recovery to an era where all District students, regardless of socioeconomic or disability status, can thrive in an increasingly global labor market.

01

3Di – “3% for Data and Innovation”

The first step of any innovation or intervention rollout is to add at least 3% to the budget to cover data collection, analysis, and improvement activities. Three percent is an industry baseline standard for effective research and development of new initiatives.

02

3tV – “tend to the Variation”

The second step in the Rule of 3's for new initiatives is recognizing that almost every good idea can work and scale, but not everywhere, every time. Leaders and implementers should regularly tend to the variation in performance and more deeply understand what's working, where, and why.

03

3Y's – “3 Why's.”

When probing qualitative information about why an intervention is working or not, we must remember to ask “why” at least three times successively. Almost always, an initiative's issue or lack of broad success at the surface level is just that, and the real root cause of variation in performance is something we find and correct by digging deeper.

Given that we raised the bar this year, we want to recognize the following schools serving a high economically disadvantaged population, each earning a 2023 PPAE above 5.0 but below this year's Bold Performance level of 7.5 PPAE.

Chavez - Parkside HS

DC Prep - Anacostia ES

DC Prep - Edgewood MS

Digital Pioneers - Cap Hill

Eagle - Riverfront

E.L. Haynes - HS

Friendship - Collegiate

Friendship - Southeast MS

KIPP DC - Honor

Patterson ES (DCPS)

Sojourner Truth

The following middle and high schools, which had the most improved PPAE for PARCC 3+ from 2022 to 2023, also play a role in reducing the correlation between socioeconomic status and proficiency:

Anacostia HS (DCPS)

Ballou HS (DCPS)

DC Prep – Edgewood MS

Dunbar HS (DCPS)

Friendship – Armstrong MS

Friendship – Collegiate HS

Friendship – Tech Prep HS

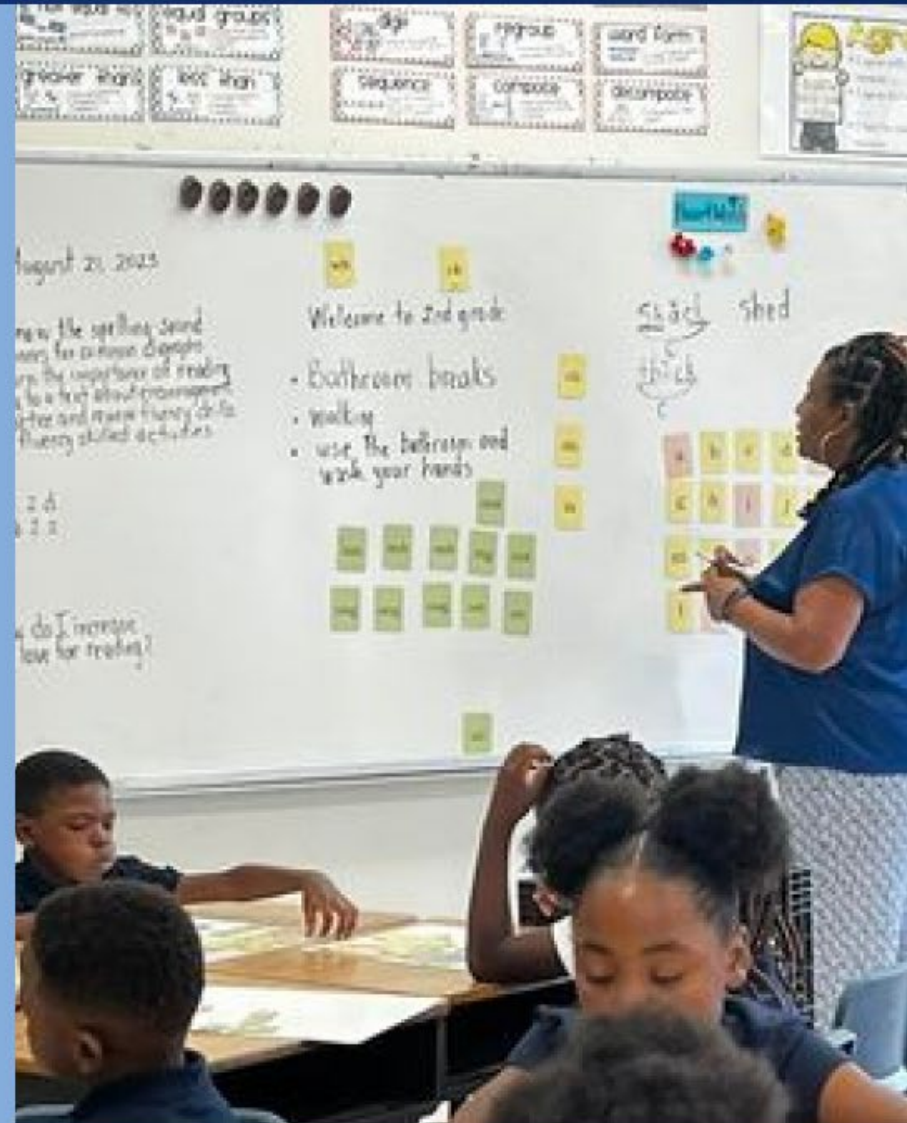
Johnson MS (DCPS)

KIPP DC – Honor

Kramer MS (DCPS)

Sojourner Truth

Sousa MS (DCPS)

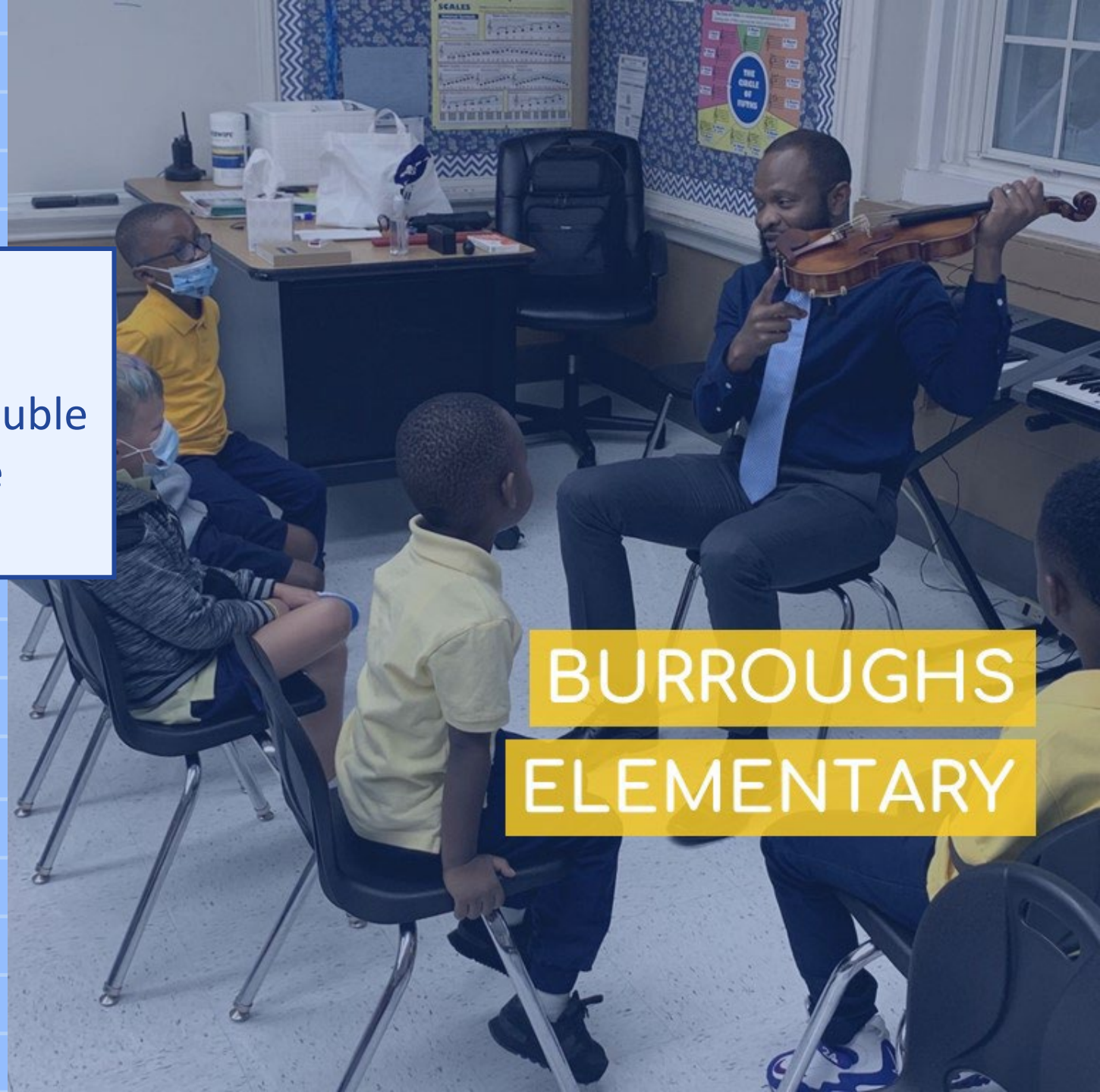


13.2

PPAE



- Also Bold Perf. in 2022
- At-risk ELA 4+ proficiency more than double city average, math more than triple



BURROUGHS
ELEMENTARY



PPAE

10.2

- Also Bold Perf. in 2022, 2019
- Highest ELA/Math combined 3+ proficiency for at-risk students in the city (for open enrollment schools)

CENTER CITY

CONGRESS HEIGHTS

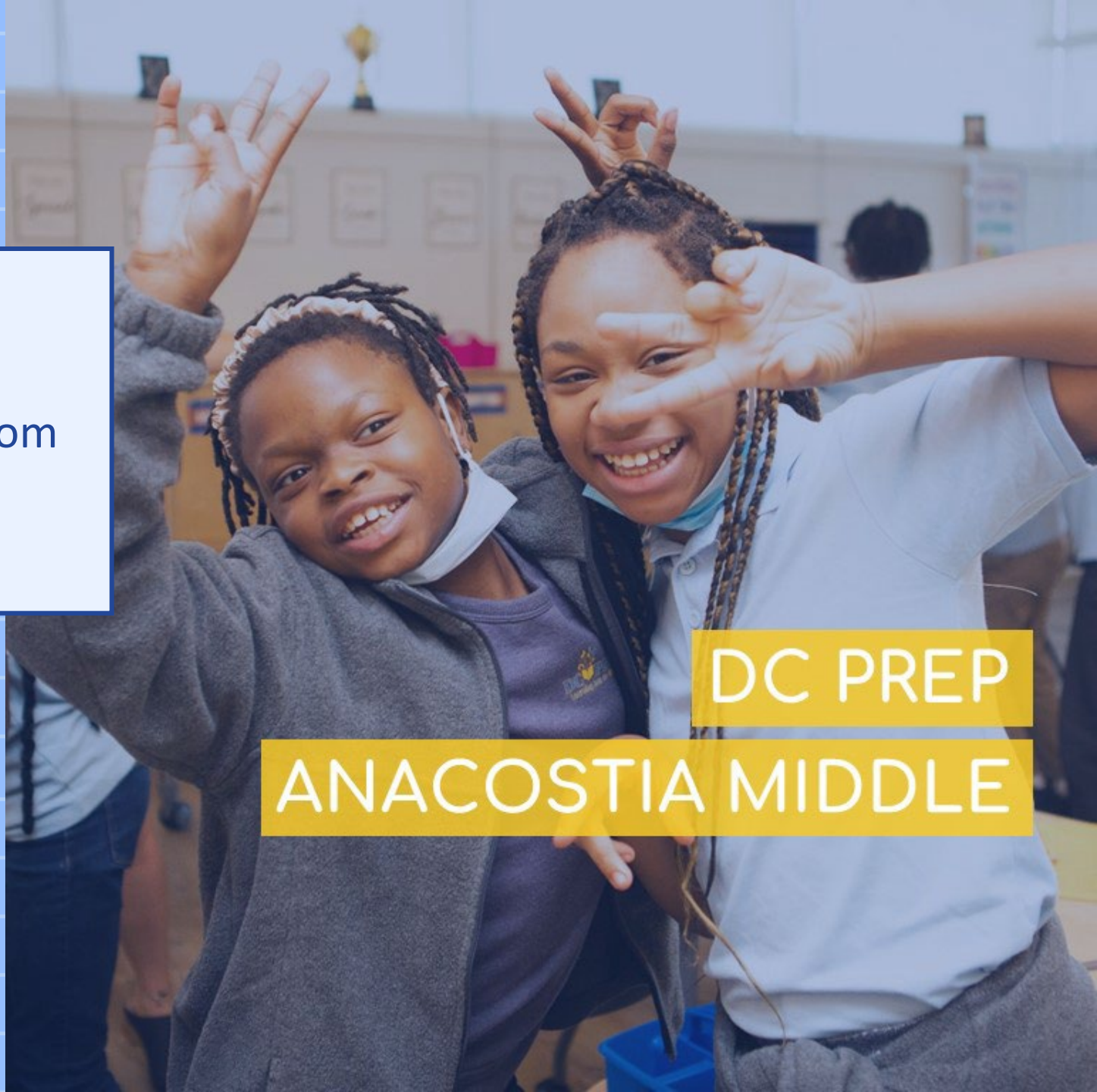


7.8

PPAE



- Tested 72% at-risk
- Most improved math 3+ proficiency from 2022 for at-risk students in the city



DC PREP

ANACOSTIA MIDDLE



PPAE

14.7

- 3rd highest PPAE in the city
 - Tested 77% at-risk
- Also Bold Perf. in 2016, 2017

FRIENDSHIP BLOW PIERCE

ELEMENTARY



11.2

PPAE



- Tested 75% at-risk
- Also Bold Perf. in 2016, 2018, 2019
- 2nd most improved ELA 3+ proficiency for at-risk students in the city



FRIENDSHIP

BLOW PIERCE MIDDLE



PPAE

8.7

- Tested 73% at-risk
- Second most improved ELA 4+ proficiency in the city

FRIENDSHIP IDEAL MIDDLE



11.5

PPAE



- Also Bold Perf. in 2022, 2019
- 5th grade at-risk 4+ proficiency in ELA more than double city avg, almost triple in math



GARRISON

ELEMENTARY

LANGDON ELEMENTARY



PPAE

8.8

- Tested 64% at-risk
- Also Bold Perf. in 2022, 2019
- At-risk students proficiency improved 8 pts in ELA and 10 pts in math



14.9

PPAE



- Highest PPAE in the city
- Also Bold Perf. in 2022, 2019



PAYNE ELEMENTARY

ROCKETSHIP

CITY COMMUNITY PREP



ROCKETSHIP

INFINITY ELEMENTARY



PPAE

9.9

- Tested 65% at-risk
- Most improved ELA 4+ proficiency for at-risk students in the city



14.8

PPAE



- 2nd highest PPAE in the city
- Also Bold Perf. in 2022



ROOTS ELEMENTARY

WHITTIER ELEMENTARY



PPAE

11.8

- Also Bold Perf. in 2019
- 2nd highest ELA/Math combined 3+ proficiency for at-risk students in the city (for open enrollment schools)



THANK YOU:

CITYBRIDGE FOUNDATION

EDUCATION FORWARD DC

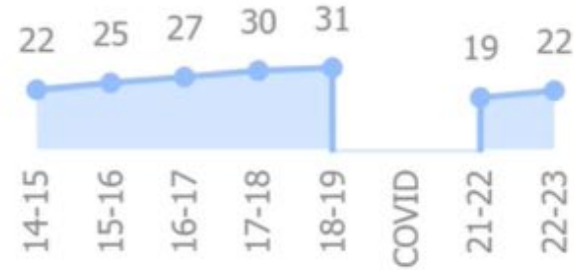
DC POLICY CENTER

BOLD EDUCATORS!

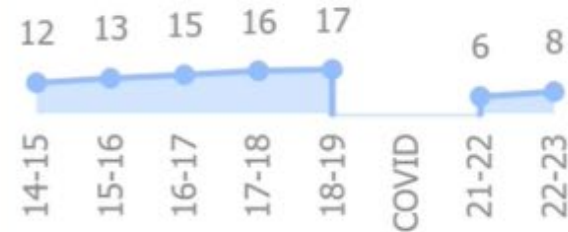
In 2023, DC students demonstrated achievement gains in math and reading, including for high priority student groups. However, proficiency remained below 2019 pre-pandemic levels.

MATH PROFICIENCY

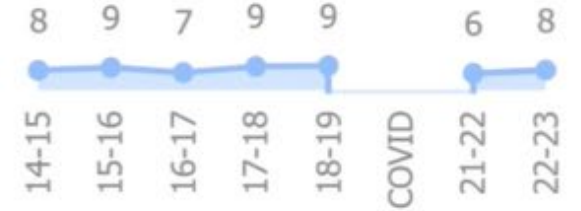
All Students



Students Designated as At-risk

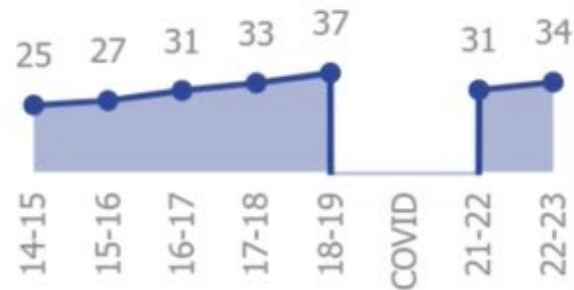


Students with Disabilities



READING PROFICIENCY

All Students



Students Designated as At-risk



Students with Disabilities



AT THE CURRENT RATE OF IMPROVEMENT:

Reading proficiency will recover 2019 pre-pandemic rates in the next 2-3 years.

Math recovery may require another 4-6 years for some priority groups.

Recovery Years Left At Current Rate of Improvement by Student Group and Metric

Subject Group	ELA		Math	
	PARCC4+	PARCC3+	PARCC4+	PARCC3+
All Students	2	3	4	4
At-risk	1	2	5	3
SwD	0	1	3	3
ELL	0	1	3	2
Asian	NOP	NOP	NOP	NOP
Black	2	3	6	5
Hispanic	5	NOP	6	6
White	NOP	NOP	1	2

NOP = Not On-Pace for recovery, scores for the student group and metric declined in 2023 instead of recovering

Economically disadvantaged students at the 2023 Bold Performance Schools have recovered COVID unfinished learning more quickly than at other schools across the District.

Figure 9. Percent of K-8 Economically Disadvantaged Students On or Above Grade Level in Math and Reading over Time

